

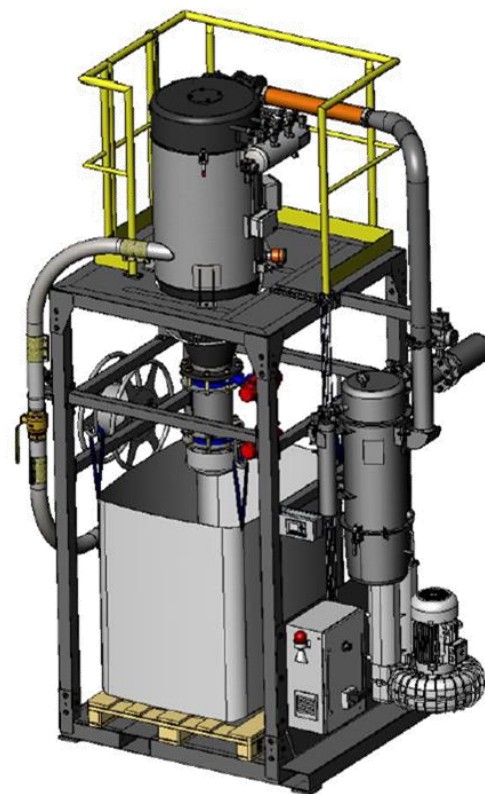


SETIMEP

Engenharia • Ambiente • Energia
Engineering • Environment • Energy

CENTRAL ASPIRATION SYSTEM FOR INDUSTRY

**MODEL:
SET.FC.VAC**



EQUIPMENT DESCRIPTION

The central aspiration system SET.FC.VAC it's composed by a vacuum group responsible for the aspiration of solid particles, intended to ease the cleaning of industrial spaces:

- Directly from the source through a connecting flexible tube.
- Trough a pre-determined circuit.

Observations:

- An aspiration system canalized to 01 Cyclo-Filter for solid particles separation.
- Continuous discharge of solid particles to the interior of a 1m³ BIG –BAG, equipped with a maximum level detection.

GENERAL COMPONENTS

- Cycle – Filter, destined to the reception of aspirated solids.
- Metalized Polyester Cartridge filters with anti-static and anti-moister treatment.
- Vacuum group (Parallel channels).
- Electric panel for control and protection of the vacuum group with a PLC.
- Associated instrumentation.
- Filter for protection and security of the vacuum group.
- Complementary accessories (Security valves, BY-PASS, manometers, tubing, silencers, etc.).

CLEANING SYSTEM

Automatic cleaning system by compressed air jets in counter-flow with diaphragm electro-valves controlled by a PLC.

DEDUSTING SYSTEM COMMAND

Automatic start and stop through programmable digital timer.

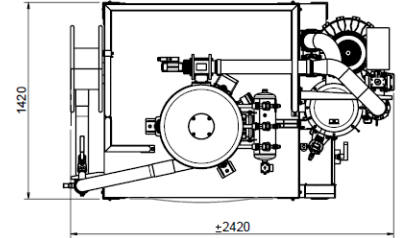
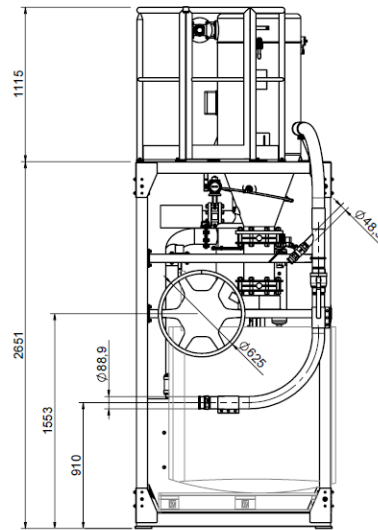
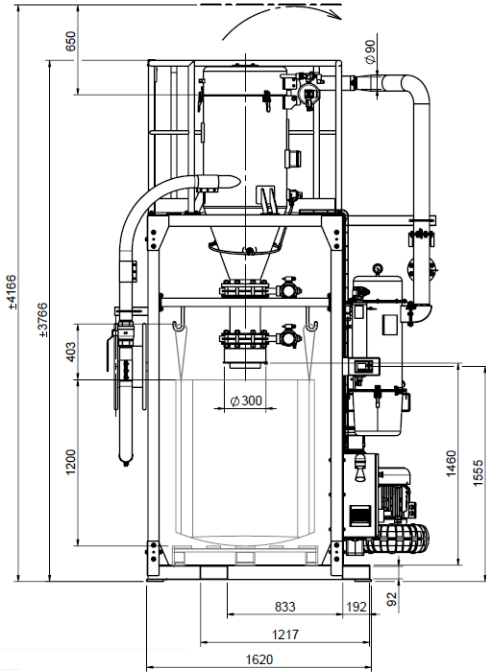
GENERAL DIMENSIONS

Dimensions are approximated and don't include the particles entry tubing system (See next page).
Consult us the characteristics of the equipment.

CONSTRUCTION TYPE

Welded construction in stainless steel AISI 304 and construction steel S235JR.

MODELO: SET.FC.VAC

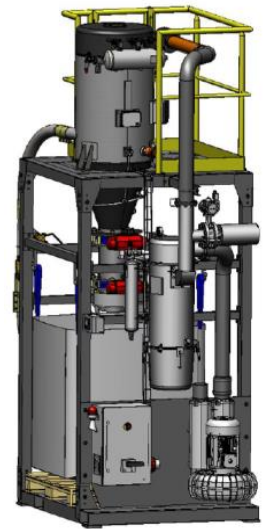


OTHER CHARACTERISTICS

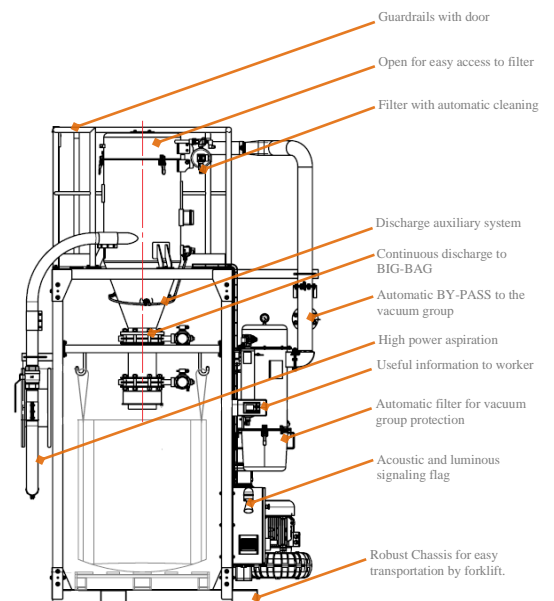
- Filtration efficiency up to 99,6% / emissions inferior to 5mg/m³.
- Easy access to all substitution and supervision components.
- Compact equipment designed to occupy the minimum space possible.
- Automatic cleaning of the filtration elements, programmable to obtain the best efficiency.
- Pipeline of 50mm diameter.
- Instructions guide available in Portuguese, Spanish, French and English.
- Certificate of conformity CE.

OPTIONAL COMPONENTS

- Construction exclusively in stainless steel.
- Ducts circuit, flexible tubes and connection accessories.



MODEL	SET.FC.VAC
Max. Flow (Am ³ /h) 20°C	950
Total Pressure (mmca)	4.000
VACUUM GROUP Motor (kW)	15
Width (mm)	1.620
Depth (mm)	2.420
Height (mm)	4.200
Consumption A.C / 6bar (Nm ³ /h)	0,1 a 0,2
Max. Working Temperature (°C)	20 / 30



NOTE: All characteristics presented in this standard version could be adapted to the client needs. Ex. Different filtration area; different vacuum group characteristics; etc.



SETIMEP, LDA

Rua Óscar Dias Pereira, 84 - Gualtar 4710-081 Braga | T. +351 253 679 469 | F. +351 253 679 478 | info@setimep.com | www.setimep.com

CAPITAL SOCIAL 50.000 EUROS, MATRICULADA NA CONSERVATÓRIA DO REGISTO COMERCIAL DE BRAGA, SOB Nº 6648 DFE 14/10/99, PESSOAL COL. Nº 503002780