



**SETIMEP**

Engenharia • Ambiente • Energia  
Engineering • Environment • Energy

## AXIAL FAN

**MODEL:  
SET.VT.AXL**

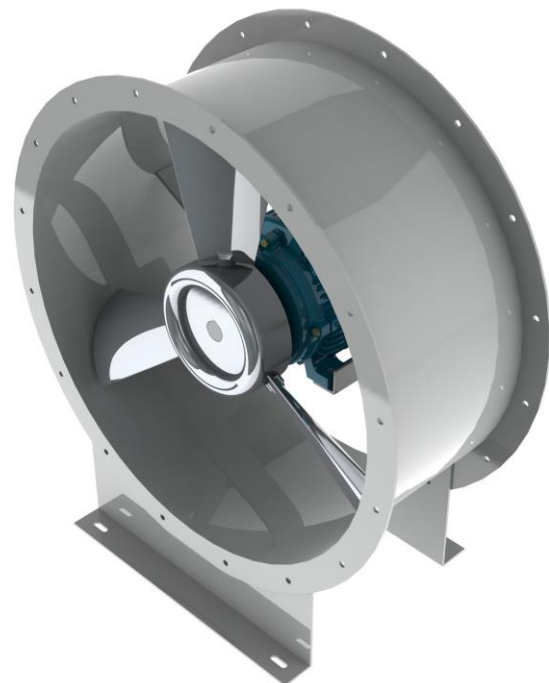
### PRODUCT DESCRIPTION

The Axial Fan is a turbo machine that produces the displacement of gases. It consists of a rotor with paddle actuated by a motor.

The rotation of the assembly rotor + paddle promote the transformation of mechanical energy from the motor in potential pressure energy and kinetic energy

### TYPE OF CONSTRUCTION

Welded construction in structural carbon steel S235JR  
(Manufacturing with specific dimensions and ,material on request)



### AVAILABLE RANGE

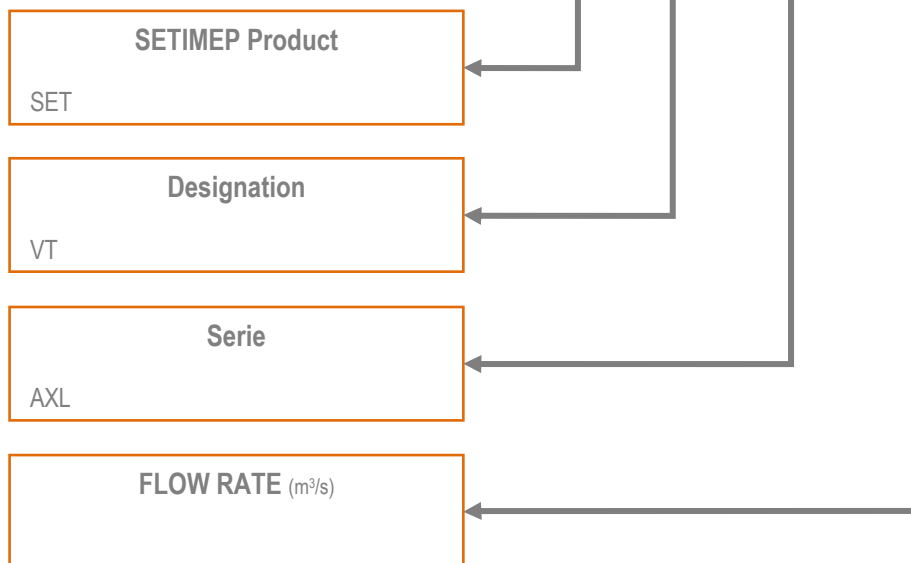
Blowers with variable diameter and pitch, that permit blowing any kind of fluids achieving flow rates to 83m<sup>3</sup>/s (300 000 m<sup>3</sup>/h) with pressures to 140 mmca and efficiency that could achieve 77%

Blower Blades with an attack angle variable that could adapt itself to the application and to the client necessities.

For more information contact us

### CODIFICATION / REFERENCE

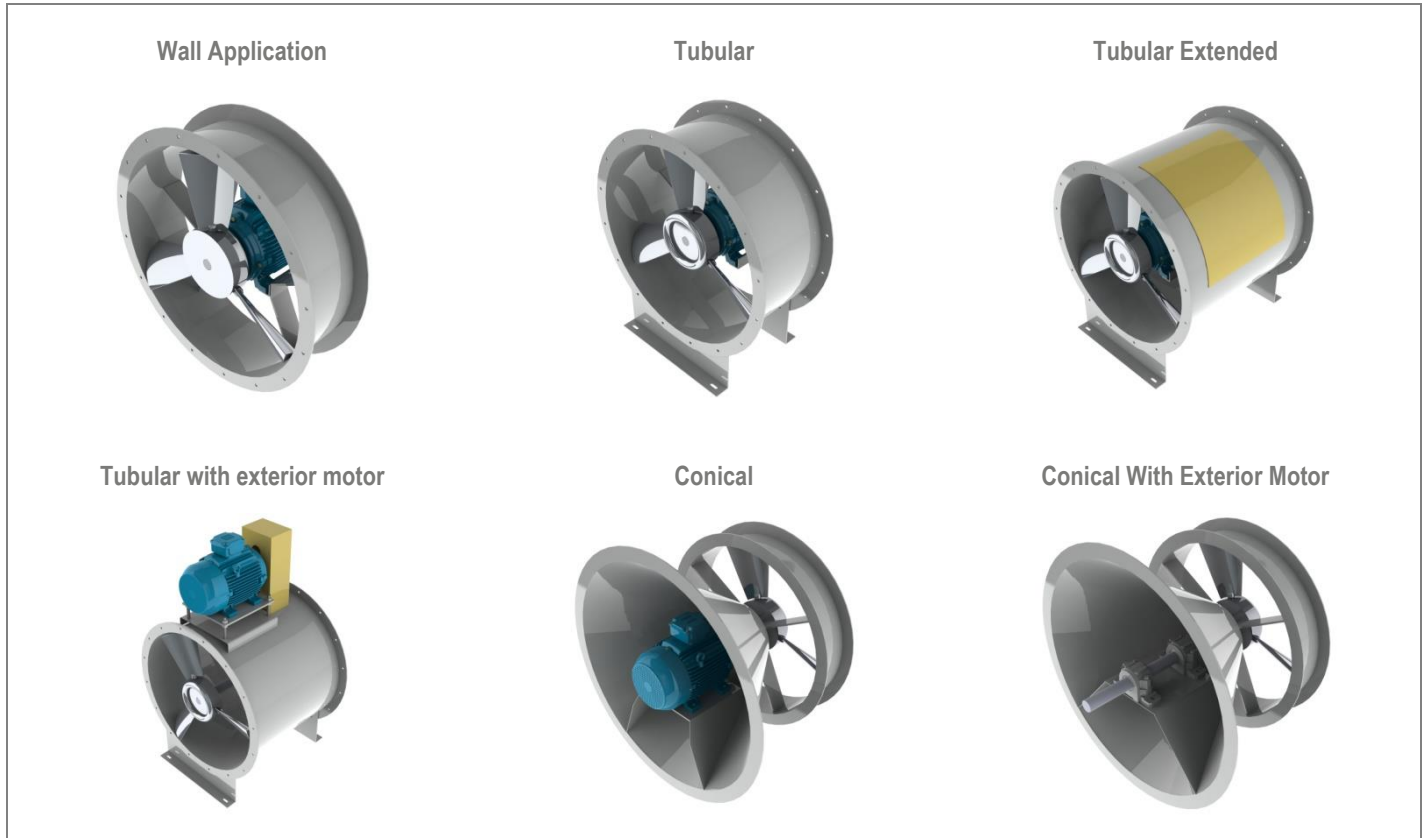
**SET . VT. AXL . 0008**



Ex: SET.VT.AXL.0020 → Axial Fan for a flow rate of 8 m<sup>3</sup>/s

### TECHNICAL SPECIFICATION

#### ASSEMBLY POSITIONS



#### OPTIONS

- 1 - Protection Grid
- 2 - Flexible Joint for one or two sides
- 3 - Counter - Flanges
- 4 - Entry cone
- 5 - All kinds of finishing
- 6 - Exterior motor connection box
- 7 - Motor Cable
- 8 - Electric Motor
- 9 - Exit diffuser Cone
- 10 - Silencer
- 11 - Fixation Foot
- 12 - Buffers
- 13 - Inspection door
- 14 - Connection for suppression cowl flap
- 15 - Suppression cowl flap

