

SETIMEP

ENGINEERING, ENVIRONMENT AND ENERGY



SETIMEP®



CASE STUDY PETCOKE GRINDING UNIT



ISO 9001

SETIMEP® 2015 REV 00

© 2015 COPYRIGHT. ALL RIGHTS RESERVED



Project, construction and installation of industrial air treatment equipment:

- **Dry effluent treatment**
 - Bag House Filters
 - Cartridge Filters
 - Electrostatic Filters
 - Cyclones
- **Dosing and transport**
 - Rotary valves
 - Screw conveyor
 - Double flap valve
- **Ducts**
 - Flanges,
 - Straight duct
 - Elbows
 - Branch
- **Storage and Pneumatic conveying**
 - Filters for silos
 - Safety valves
 - Anti-wear elbows
 - Vibrating bottoms
 - Weighing systems
 - Pneumatic and dosing equipment
- **Energy**
 - Biomass drying equipment
 - Biomass thermoelectric generator
 - Cogeneration (Boiler/engine)
- **Vacuum cleaning systems**
 - Mobile aspirator

BRANCHES OF ACTIVITY



CEMENT



FOUNDRY



CHEMICAL



MINING



PETCOKE GRINDING UNIT | INNOVATIVE SETIMEP DESIGN



- COMPACT SYSTEM

- MOBILE FACILITIES ON SKIDS

- FAST IMPLEMENTATION

- EASY MAINTENANCE

- HIGH PERFORMANCE

- COMPETITIVE PRICE

Installation of skid mounted petcoke grinding units to substitute very costly heavy fuel oil by petcoke



PETCOKE GENERAL DATA



TYPICAL PETCOKE INPUT SPECIFICATIONS

CAPACITY RANGE (t/h)	5-10
GRANULOMETRY (mm)	0-150
HUMIDITY (%)	< 10
PCI (kcal/kg)	7600-8300
HARDGROVE (HGI)	55 (40-60)
DENSITY (kg/m ³)	850-1000
SULPHUR (%)	<5,5
ASH CONTENT(%)	0,3-0,7
VOLATILE (%)	10-14
IGNITION TEMPERATURE(°C)	≈ 670
CONTAMINATON	(*)



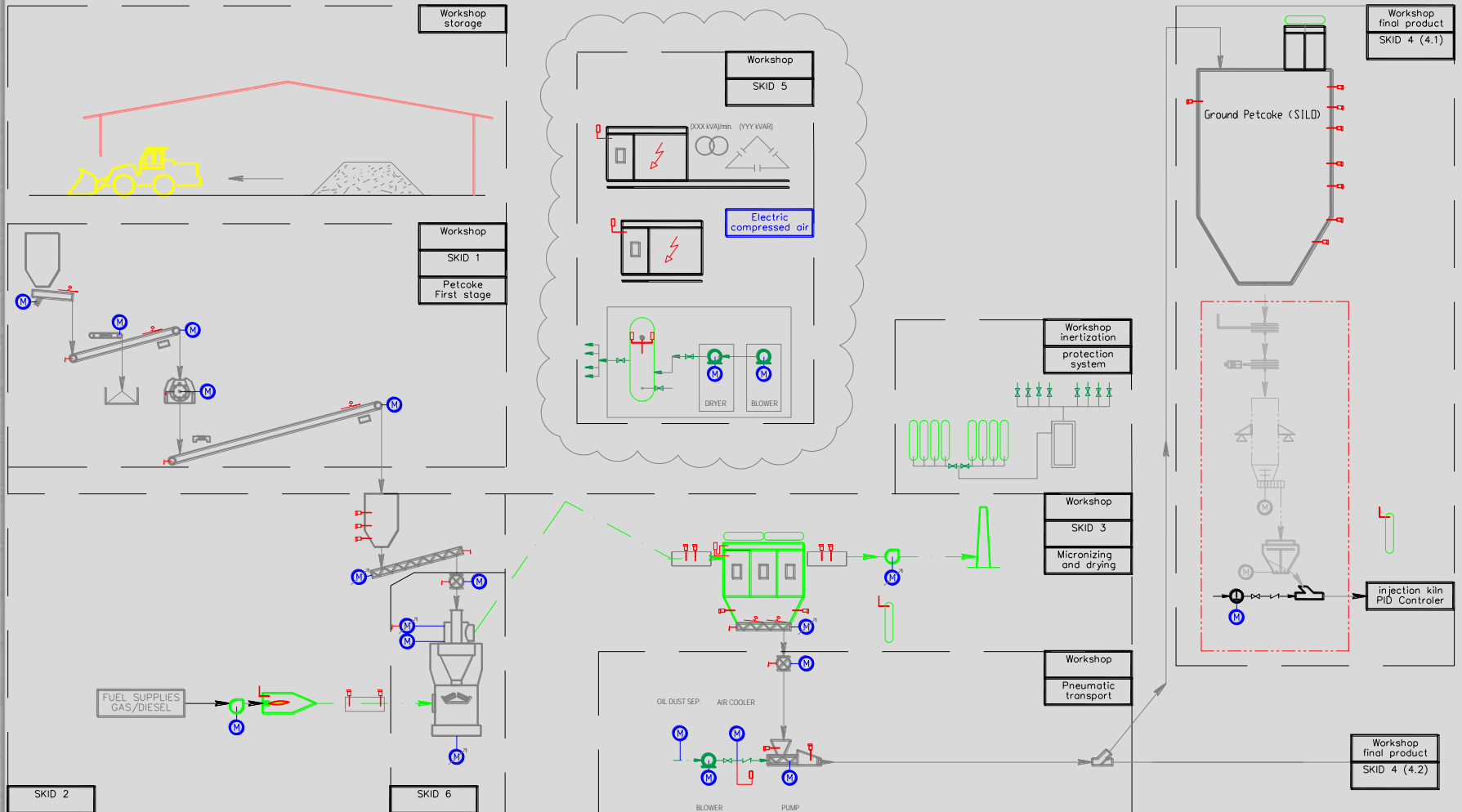
TYPICAL PETCOKE OUTPUT SPECIFICATIONS

SIZE (µm)	90% under 90
HUMIDITY (%)	Under 0,5
DENSITY (kg/m ³)	600-900
CONTAMINATON (*)	CLEAN

(*) Metal; Plastic; Biomass and Stones



TYPICAL FLOW DIAGRAM



SETIMEP PARTNERSHIP BENEFITS



- LOCAL PARTNERSHIP FOR MECHANICAL/ELECTRICAL MANUFACTURING
- FRIENDLY USER MAN-MACHINE INTERFACE
- PRE-ASSEMBLY AND TESTING IN WORKSHOP
- CONTAINERISED ELECTRICAL ROOM
- KNOW HOW



ISO 9001

SETIMEP® 2015 REV 00

© 2015 COPYRIGHT. ALL RIGHTS RESERVED



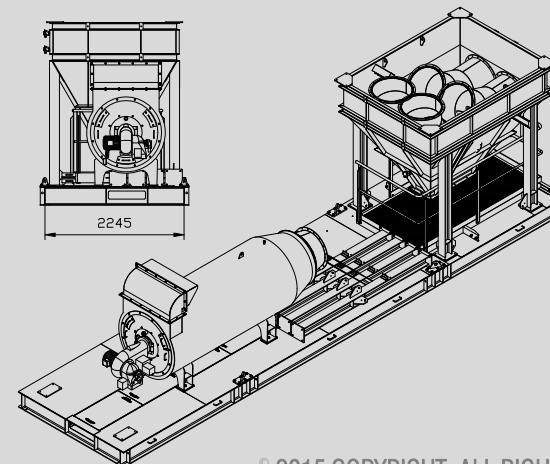
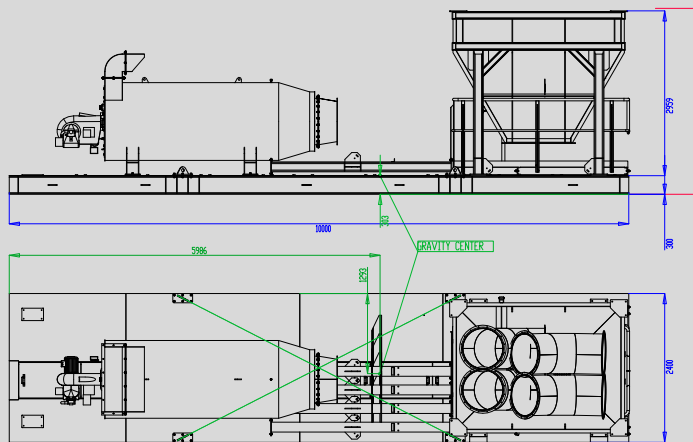
LOW VOLUME AND LOW WEIGHT

- 8 TO 10 CONTAINERS (Depending of number of silos)
- COVER WITH LPDE (Low density polyethylene)
- CERTIFIED WOOD BOX



LOW VOLUME AND LOW WEIGHT

- SHIPMENT AT OPO-LEIXÕES (PORTO-PORTUGAL)
- CONTAINER LOADING SIMULATION SOFTWARE



CASE STUDY



TYPICAL PETCOKE GRINDING UNIT – SETIMEP DESIGN



CASE STUDY



TYPICAL PETCOKE GRINDING UNIT – SETIMEP DESIGN



END



“READY TO WORK ON YOUR NEXT PROJECT”

SETIMEP
Rua Óscar Dias Pereira, nº 84
4710-081 Gualtar – Braga
Portugal

Phone: +351 253 679 469
Fax: +351 253 679 478
E-mail: info@setimep.com
Website: www.setimep.pt
GPS: W 8.38538°, N 41.56898°

